

TOWN AND GOWN COMMUNITIES: WORKING TOGETHER FOR DOWNTOWN REVITALIZATION

Panelists:

Steven Burg, Professor of History & History Dept. Chair,
Shippensburg University, Shippensburg, PA

Ashley Perzyna, Assistant Chief of Staff to the President,
Dickinson College, Carlisle, PA

Mary Bannon, Selinsgrove Main Street Manager at Susquehanna University,
Susquehanna University, Selinsgrove, PA

Steven Stumbris, Director, Bucknell Univ. Small Business Development Center,
Bucknell University, Lewisburg, PA

TOWN AND GOWN COMMUNITIES: WORKING TOGETHER FOR DOWNTOWN REVITALIZATION

SHIPPENSBURG UNIVERSITY & SHIPPENSBURG BOROUGH

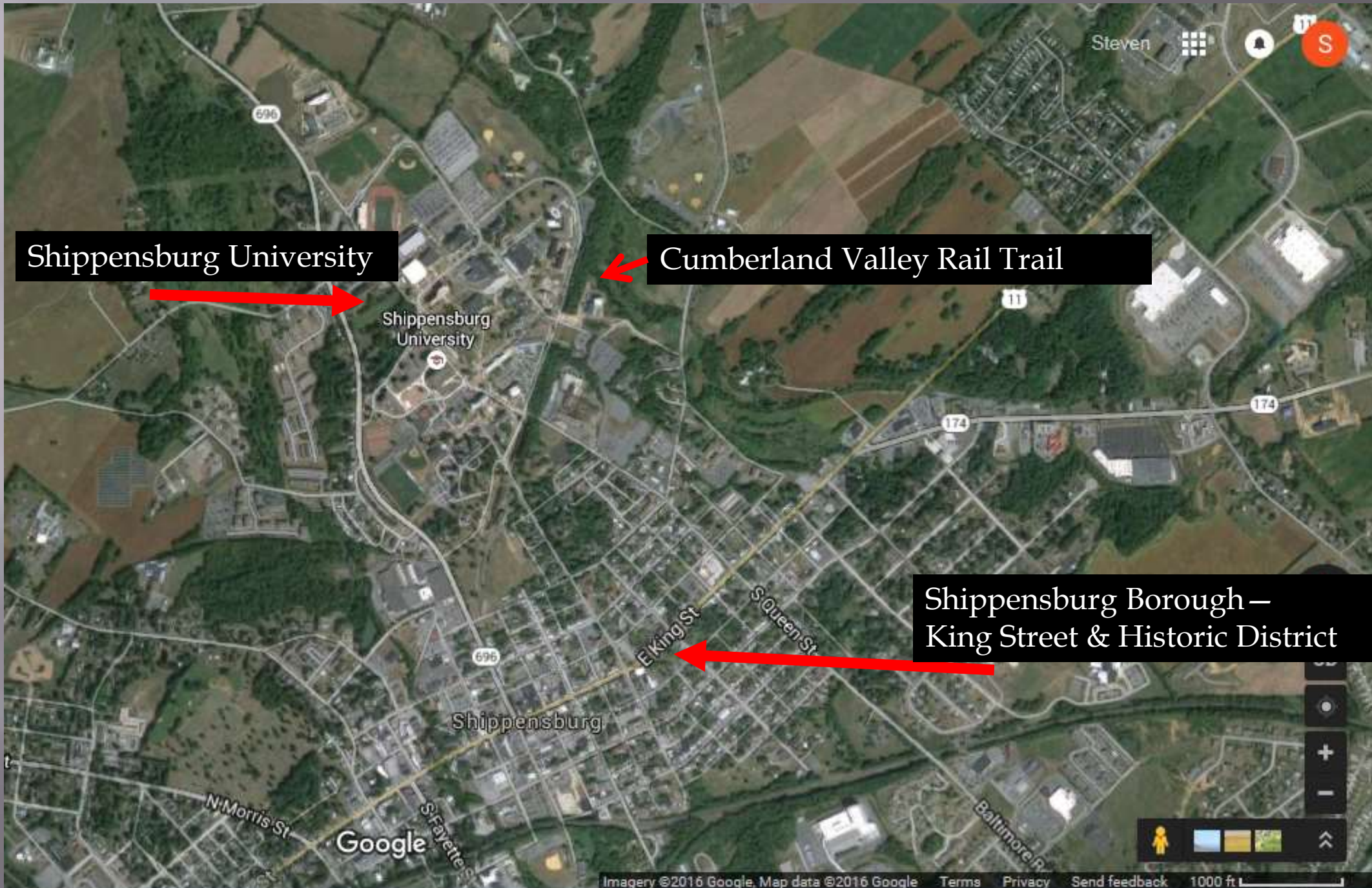


Steven Burg, Ph.D.
Department of History
Shippensburg University of PA

Shippensburg University

Cumberland Valley Rail Trail

Shippensburg Borough –
King Street & Historic District



Shippensburg University & Borough Downtown Revitalization Efforts



Dr. Tim Ebersole, loaned to Shippensburg Chamber of Commerce as Interim Director, 2009-2012



2009-2011: Downtown Revitalization Plan, Borough adopted by March 2011



2007-2016: Shippensburg University Small Business Development Center

Shippensburg History Department Initiatives

M.A. in Applied History/ B.A. with Public History: Rediscovering Shippensburg's Downtown Historic Resources

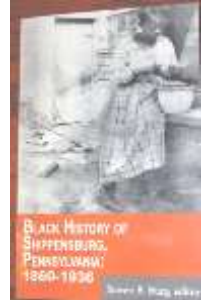
Shippensburg Civil War Trail Interpretative Waysides & Self-Guided Tour



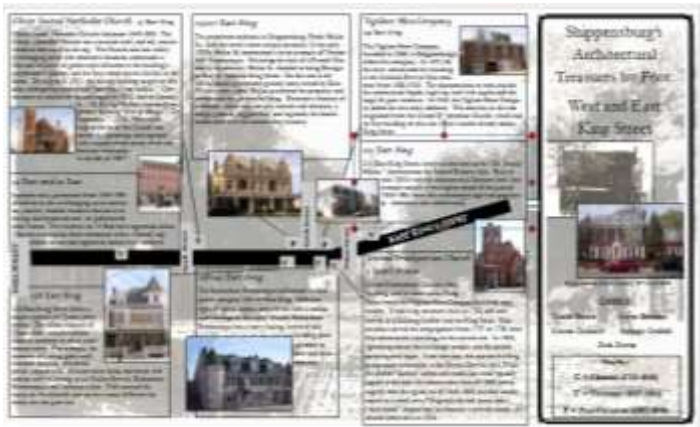
Research and Interpretation: Widow Piper's Tavern Audio Tour & Dykeman Hatch House Tour



Locust Grove Cemetery: Research, Restoration & Interpretation



Historic Architecture Tours



Historic District Awareness Events: "Unpeeling Amazing Orange Street" (2014)

